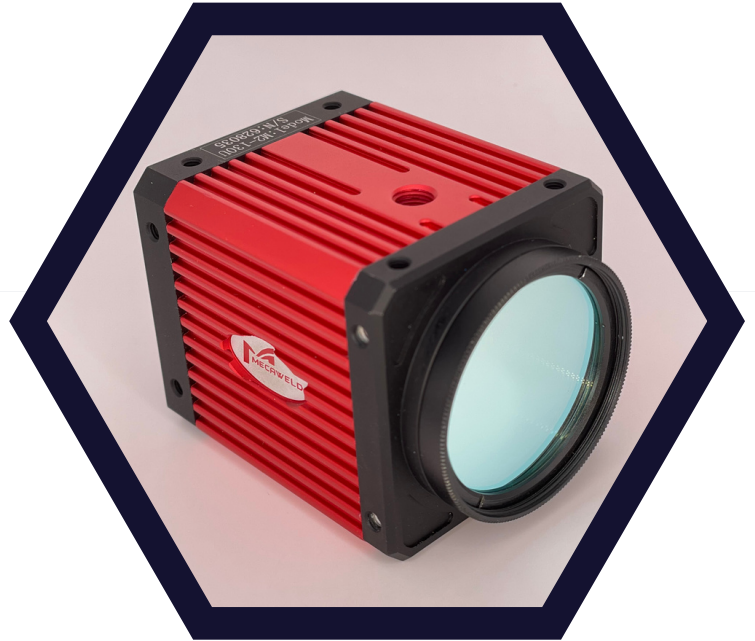


WELDING VISION CAMERA

“SEE THE UNSEEABLE”

Resolution: 1280 x 1024
Max Frame Rate: 206fps
Working Distance: 160-450mm

Scope of Applications:
Laser Welding | 3D Printing
MMA | TIG | MIG | MAG | PAW

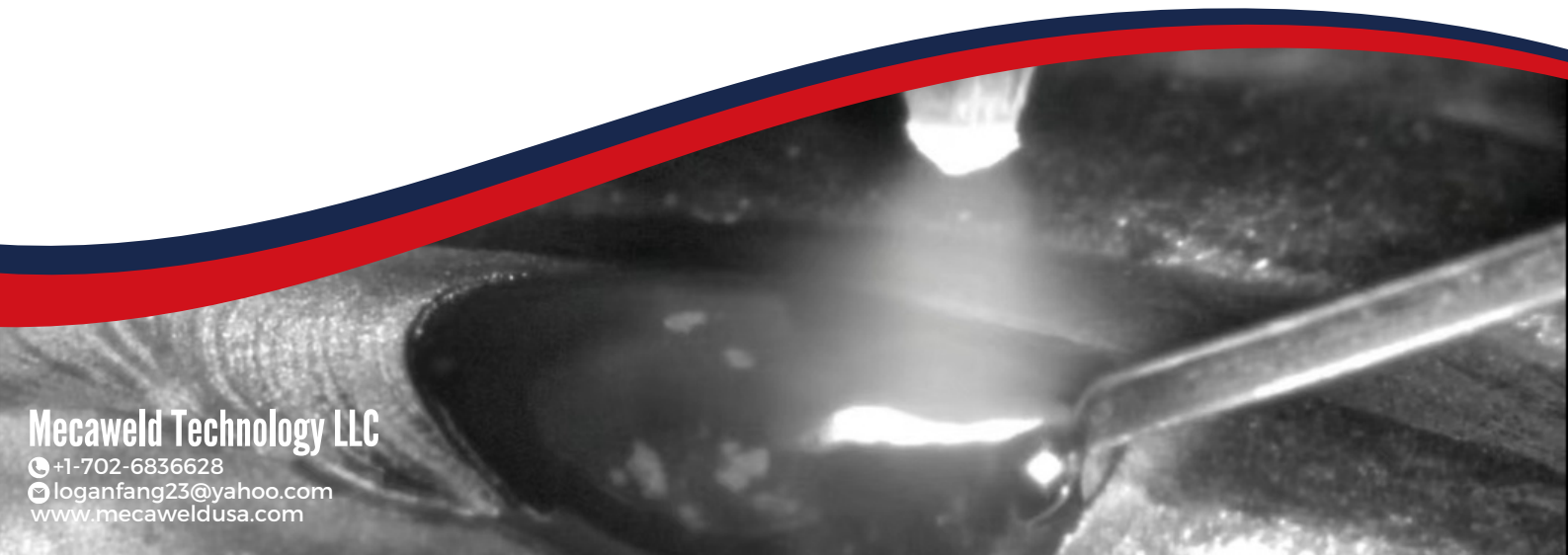


Prevent eye injuries from arc exposure.
Equip robots with "eyes".

Monitoring welding process affordably.
Visualizing molten pool in detail.

Mecaweld Technology LLC

+1-702-6836628
loganfang23@yahoo.com
www.mecaweldusa.com





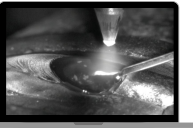
Welding is an important manufacturing process where ensuring welding quality and consistency is crucial. The Mecaweld welding vision camera is an advanced tool specifically designed for monitoring and controlling the welding process.

Features of M2-130U(B&W)/C2-130U (Color)



M2-130U/C2-130U Camera

- Resolution of 1280x1024@206fps for compressed and uncompressed images.
- Requires installation of professional SDK software on a computer to view real-time captured images, capture snapshots, or record videos.
- Uses fiber optic USB cables to avoid electromagnetic fields or high-frequency interference.
- It has more adjustable parameters compared to the M2-130H camera, making it suitable for secondary development.

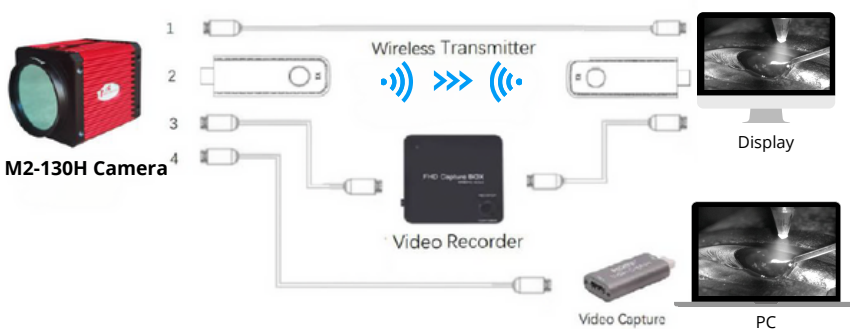


PC



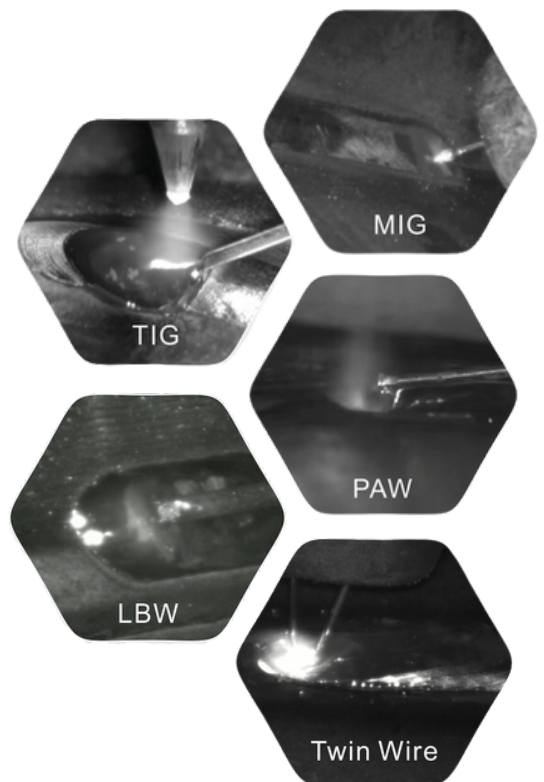
- 1 Active visualization technology with built-in infrared light source, providing full-field high-definition images with uniform brightness
- 2 High-quality hardware and cutting edge software algorithms that effectively bypass the arc.
- 3 Capable of seeing through smoke and dust.
- 4 One camera, one setting, for all applications: MMA/TIG/MIG/MAG/PAW/LBW/3D Printing, etc, in various materials such as carbon steel, stainless steel, aluminum alloy, etc.
- 5 Built-in f25mm lens, and an interchangeable with f42mm lens, adjustable effective working distance of 160-450mm.
- 6 Optional water-cooling plate for continuous operation in high-temperature environments.
- 7 Fiber optic data cables to avoid electromagnetic fields and high-frequency interference.
- 8 Compact size.
- 9 Easy to operate.

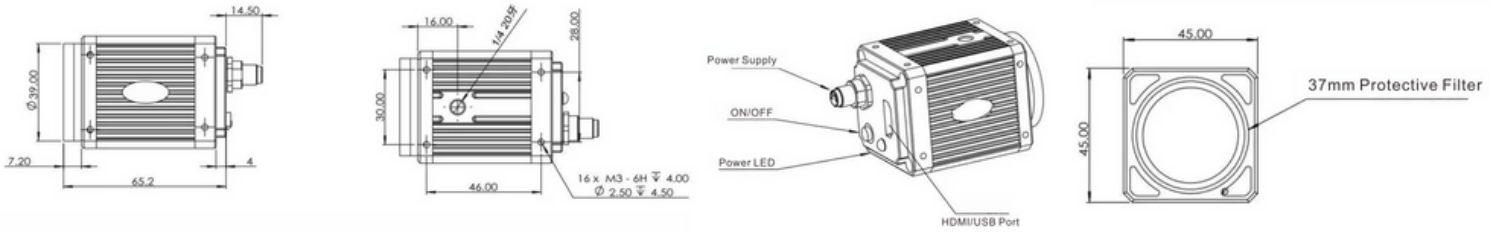
Features of M2-130H



M2-130H Camera

- Resolution of 1280x1024@60fps
- No need for a computer, directly connect the camera to a display screen.
- Plug-and-play functionality, ready to use.
- Uses fiber optic HDMI cables to avoid electromagnetic fields and high-frequency interference.
- It can also be used with wireless image transmission and an optional battery power supply to avoid cable clutter, making it more convenient for robotic welding.
- Optional HDMI recorder for recording and playback of captured videos.



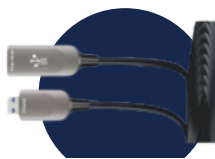


Model	M2-130H	M2-130U	C2-130U
Sensor Type	B&W 1/2.7 CMOS imager	B&W 1/2.7 CMOS imager	Color 1/2.7 CMOS imager
Max Resolution	1280x1024	1280x1024	1280x1024
Frame Rate	60fps	206fps	206fps
Protocol	HDMI Output	UBS3.0/U3Vision/GenICam	UBS3.0/U3Vision/GenICam
Operation System/Software	No need for computer	Win7/Win10/Android	Win7/Win10/Android
Lens	F=25mm(Built-in) F=42mm(Interchangeable)	F=25mm(Built-in) F=42mm(Interchangeable)	F=25mm(Built-in) F=42mm(Interchangeable)
Working Distance	160-250mm(F25mm lens) 200-450mm(F42mm lens)	160-250mm(F25mm lens) 200-450mm(F42mm lens)	160-250mm(F25mm lens) 200-450mm(F42mm lens)
Working Temperature	-40°-85°C	-40°-85°C	-40°-85°C
Dimension	45x45x65.2mm	45x45x65.2mm	45x45x65.2mm

OPTIONS



Wireless Transmitter



Fiber Optical USB Extension Cable



Fiber Optical HDMI Cable



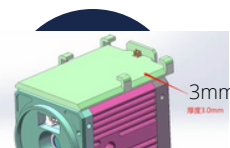
Fine Adjustment Rack



Recorder



Copper Cooling Plate



Battery Compartment



HDMI-UVC Capture Card

